

AUTOCLEAR 400+

High Capacity, Portable Parcel X-ray For Explosives, Weapons & Narcotics



***Lower profile, bottom-up design makes items and fine lines much sharper and larger on-screen.**

Control Screening is the leading worldwide producer of fast, reliable and sophisticated X-ray, Metal and Trace Detection screening systems. Visit us at www.controlscreening.com. Ask about our mobile and cargo systems. Our advanced systems and options are often integrated, leased or rented.

The AUTOCLEAR® 400+ (featuring a 60 cm wide x 40 cm high or 24.4" wide x 16.5" high tunnel opening) is a compact, lightweight and ergonomic conveyorized X-ray scanner designed to inspect briefcases, purses, cameras, laptops, backpacks, shoes, mailbags, bins and parcels. Ideal for use at:

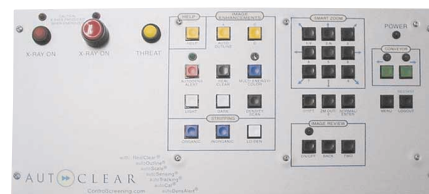
**Schools • Courthouses
Correctional Facilities
Corporate Facilities • Mailrooms
Embassies
Government Buildings
Special Events • Airports
Military Bases • Banks
Police Stations
Nightclubs • Law Firms
Executive Mail**

Features

- More affordable and portable than other 6040 size scanners, with equal throughput. Compact version above, or available extended conveyor model 400+E.
- 90 kV, 10mm penetration offers twice the penetration available elsewhere, eliminating hand searches and improving image quality.
- Ergonomic height and smaller footprint enhances security and fits in narrow doorways, elevators and spaces; conveyor folds for transport.
- Parcel contents are displayed at normal scale, wherever located, automatically and without distortion (autoScale®). RealClear® function reveals components of dense items in realtime without lags or delays.
- Features Pentium 4, 17" monitor, RealClear®, autoScale®, autoDensAlert®, autoOutline®, autoSensing®, autoCal®, 64X Smart Zoom, Lighten, Help, DensityScan, and Low Density Stripping, among other features.
- Multi-Energy Color option with Organic/Inorganic Stripping is popular. TIP, Training and Image Archiving also available. auto-Matalert®, option highlights suspect materials using atomic number and density.
- autoTracking® guided conveyor belt system never needs adjustment, lowering operating costs.
- autoSensing® eliminates the need for troublesome photosensors or footpad switch. Assures 100% screening of thin blades or plastique in magazines or courier envelopes, or of bag already in tunnel at start-up.
- Interactive training and highly responsive local service. Engineered, made and rigorously tested in the USA to ISO 9001 and regulatory standards.



RealClear® reveals components of a gun, knife and bomb in real time, without lags and delays. autoScale® displays contents at Pentium 4 resolution automatically and without distortion.



User-friendly, ergonomic and fully-featured operator control panel.

Celebrating 70 years of excellence in design & support

AUTOCLEAR
autoclearus.com

Scintrex® • Federal Labs® • CheckGate® • CPAD • Control Screening
U.S. Canada France Spain Dubai Latin America Singapore

Model 400+ Compact X-ray Specifications

Overall Dimensions: Inspection Capabilities

Tunnel Size:

154.0 cm (60.6") L x 83.2 cm (32.8") W x 126.4 cm (49.8") H

Material Penetration:

24.4" wide (60 cm)

Contrast Sensitivity:

16.5" high (40 cm)

Resolution:

L-shaped detector for 100% package screening.

Processing:

10 mm (0.39") steel.

Over 2 million color tones standard.

40 AWG wire.

32-bit adaptive image processing with minimum 128 Mbytes memory; 2.4+ GHz processor.

Conveyor Speed:

48 feet per minute; 24 cm per second. Fully reversible.

Pulling Weight:

150 kg (331 lbs) (Higher pulling weights available).

autoTracking®:

Belt guaranteed to autoTrack for life.

Film Safety:

Guaranteed for high-speed films up to ISO 1600 (33 DIN).

***Full autoSensing® without photosensors, moving parts, or footpad.**

Reduces downtime and assures all magazines, envelopes or items are scanned, no matter how thin, or of bag already in tunnel at start-up. Enhances radiation safety.

X-ray Generator

X-ray tube head:

Self-contained, shielded tank

High voltage rating:

90 kV Operating Voltage

Duty cycle:

100% with sealed oil bath cooling

Beam orientation:

Diagonal (80° beam divergence)

Dose rate per exam:

0.1 mR. Lower doses available.

X-ray Detectors

Surface mounted, multilayer, fully integrated, high frequency, solid state detectors using high speed processors, and Pentium 4 image processing with Single Energy or optional Multi-Energy (M) Color.

Video

Standard with color 17" SVGA monitor. High resolution, flicker-free, .21 dot pitch, low rad. monitor, 1280 x 1024 video card. Single energy color is based on object density. Multi-Energy color option available with available second monitor or flat screen or larger monitor(s), displays organics in orange and inorganics in blue, both overlapping in green and very dense objects in black, and includes Organic and Inorganic Stripping.

Standard Features

- RealClear®
- autoDensalert®
- autoTracking®
- autoSensing®
- autoOutline®
- autoScale®
- autoCal®
- 64X smart zoom
- Dark & Light enhance
- DensityScan
- Color; Reverse B/W
- High/Low Density & Stripping
- High density
- Help
- Fast (25 second) initial warm-up
- Fully functional, robust, low profile
- Reversible conveyor direction

Options

- Multi-Energy organic and inorganic color & stripping
- autoMatalert®
- Threat Image Projection (TIP)
- Rollerbed(s) or conveyor extensions
- Tropical Humidity Kit
- Image Archiving
- CE marking or UK approved
- Power conditioner, or UPS
- Table or locking monitor hood
- Locking metal keypad cover
- kV, mA meter or item counter
- LCD, dual or larger monitor(s)
- Footpad or optical on/off
- Variable height keypad mount
- Clear Lexan conveyor cover
- Remote operation, printer or VCR cable
- Highspeed conveyor
- Built-in Training
- Rentals or leases
- autoNet
- TipNet

Physical Details

Dimensions:

See drawing

Weight:

590 lbs (268 kg)

800 lbs (363 kg) crated

Construction:

Unibody heavy gauge, epoxy painted steel construction with stainless steel and aluminum trim and accessories. Non-marring casters and leveling jackscrews. Corrosion-resistant command center keypad mounted on side or available table.

Environmental

Temperature range: 32° - 104°F, (0° - 40°C)

Conditions:

Humidity 20% - 95%, non-condensing.

Storage to 65°C (149°F)

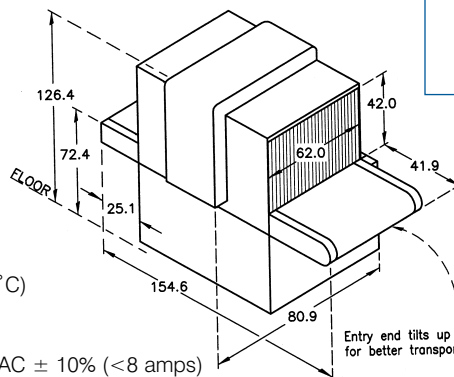
Electrical Power

Consumption: < .8 kVA, 100, 120 volts AC ± 10% (<8 amps)

Requirements:

200, 220, 230, 240, 250 volts AC ± 10% (<4 amps).

All at 50 or 60 Hz.



Dimensions are in centimeters
Note: Non-marring casters

www.autoclearus.com

World Headquarters Plant

2 Gardner Road

Fairfield, NJ 07004-2206 USA

Tel: + 1 (973) 276-6161

Fax: + 1 (973) 276-6162

leads@autoclearus.com

Western U.S.

nw@autoclearus.com

sw@autoclearus.com

Continental Europe

France

Tel: + 33 2 38 61 97 00

Fax: + 33 2 38 61 97 01

eu@autoclearus.com

Spain, Italy, Mediterranean

Tel/Fax: +34 91 650 89 86

lghedina@autoclearus.com

Canada

Scintrex Trace Plant

300 Parkdale Ave., Ottawa

Ontario, Canada K1Y 1G2

Tel: + 1 (613) 224-1061

Fax: + 1 (613) 224-2603

info@autoclearus.com

Asia

Singapore

asia@autoclearus.com

Latina/América Central

Dominican Republic

latina@autoclearus.com

Middle East

Dubai, UAE

Tel: + 971 6 557 4505

Fax: + 971 6 557 4507

me@autoclearus.com

Distributor:

ISO 9001-2000 registered

www.autoclearus.com

www.tracedetection.com www.fed-labs.com

Celebrating 70 years of excellence in design & support

AUTOCLEAR
autoclearus.com

Scintrex® • Federal Labs® • CheckGate® • CPAD • Control Screening
U.S. Canada France Spain Dubai Latin America Singapore